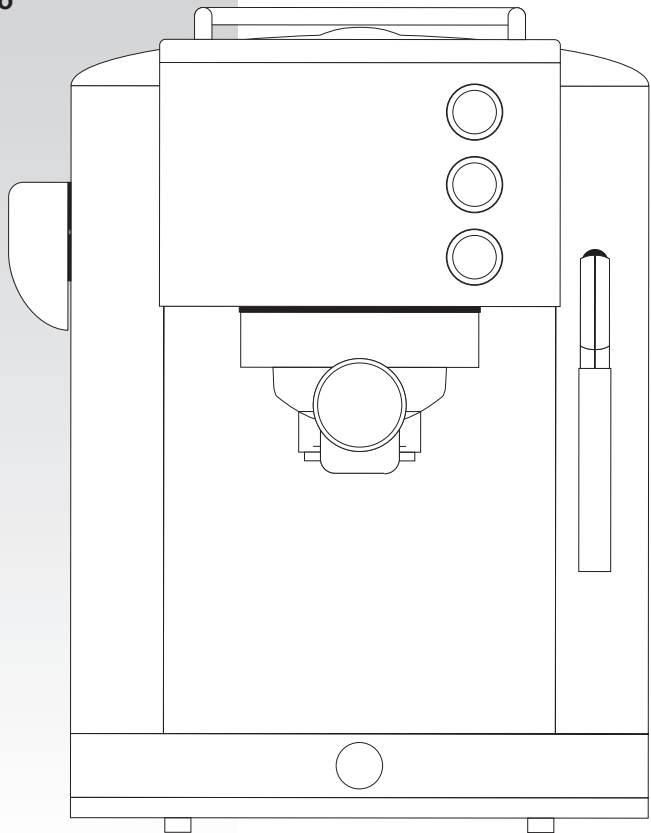




Espressione

SQUISSITA INTELLIGENT

Espresso coffee maker
Machine à café expresso
Cafetera espresso
Máquina de café



HOUSEHOLD USE ONLY
USAGE DOMESTIQUE UNIQUEMENT
SOLO USO DOMÉSTICO



IMPORTANT SAFEGUARDS

When using electrical appliances, basic safety precautions should always be followed, including the following:

1. Read all Instructions.
2. Do not touch hot surfaces. Use handles or knobs.
3. To protect against fire, electric shock and injury to persons do not immerse cord, plugs, or the appliance in water or other liquid.
4. Close supervision is necessary when any appliance is used by or near children.
5. Unplug from outlet when not in use and before cleaning. Allow to cool before putting on or *taking off parts*, and before cleaning the appliance.
6. Do not operate any appliance with a damaged cord or plug or after the appliance malfunctions, or has been damaged in any manner. Return appliance to the nearest authorized service facility for examination, repair or adjustment.
7. The use of accessory attachments not recommended by the appliance manufacturer may result in fire, electric shock or injury to persons.
8. Do not use outdoors.
9. Do not let cord hang over edge of table or counter, or touch hot surfaces.
10. Do not place on or near a hot gas or electric burner, or in a heated oven.
11. To disconnect, turn any control to "off", then remove plug from wall outlet.
12. Do not use appliance for other than intended use.

SAVE THESE INSTRUCTIONS

Household use only

SHORT CORD INSTRUCTION

A short power supply cord is to be provided to reduce the risk resulting from becoming entangled in or tripping over a longer cord. An extension cord is available and may be used if care is exercised in their use. If an extension cord is used, the marked electrical rating of the extension cord should be at least as great as the electrical rating of the appliance. The extension cord should be arranged so that it will not drape over the counter or tabletop where it can be pulled on by children or tripped over unintentionally.

POLARIZED PLUG

This appliance has a polarized plug (one blade is wider than the other). To reduce the risk of electric shock, this plug is intended to fit into a polarized outlet only one way. If the plug does not fit fully in the outlet, reverse the plug. If it still does not fit, contact a qualified electrician. Do not attempt to modify the plug in any way.



MESURES IMPORTANTES DE SÉCURITÉ

Lorsque vous utilisez des appareils électriques, des précautions de base doivent toujours être respectées, y compris les suivantes :

1. Lisez toutes les instructions.
2. Ne touchez pas les surfaces chaudes. Utiliser les poignées ou les boutons.
3. Pour protéger contre le feu, de choc électrique et de blessures, ne pas immerger le cordon, la fiche ou l'appareil dans de l'eau ou tout autre liquide.
4. Une surveillance étroite est nécessaire lorsque tout appareil est utilisé par ou à proximité d'enfants.
5. Débranchez l'appareil lorsqu'il ne sert pas et avant de le nettoyer. Laisser refroidir avant de mettre ou de *retirer des pièces* et avant de le nettoyer.
6. Ne pas utiliser l'appareil avec un cordon ou une fiche endommagé ou après que l'appareil a été en panne, ou a été endommagé de quelque façon. Retourner l'appareil le plus proche centre de service pour examen, réparation ou réglage.
7. L'utilisation d'accessoires non recommandés par le fabricant de l'appareil peut de provoquer un incendie, de choc électrique ou de blessures.
8. Ne pas utiliser à l'extérieur
9. Ne laissez pas pendre le cordon de la table ou du comptoir, ni toucher des surfaces chaudes.
10. Ne pas placer sur ou près d'un brûleur à gaz ou électrique, ou dans un four chauffé
11. Pour déconnecter, tour aucun contrôle à "off " puis retirer la fiche de la prise mural.
12. Ne pas utiliser l'appareil pour un usage autre que prévu.

CONSERVEZ CES INSTRUCTIONS

Usage domesti- que uniquement

AVERTISSEMENTS SUR LE CABLE ELECTRIQUE

Le câble électrique fourni est suffisamment court pour qu'il ne s'entortille pas et éviter qu'on puisse y trébucher. On peut utiliser, en faisant très attention, des rallonges. Si on utilise une rallonge, vérifier que le voltage reporté sur la rallonge est identique au voltage de l'électroménager. La rallonge doit être positionnée de manière à ce qu'elle ne pende pas du plan d'appui ou de la table, pour ne pas être tirée par les enfants ni ne faire trébucher.

PRISE POLARISÉE

La machine est équipée d'une prise polarisée (avec un contact plus large que l'autre). Par sécurité, la fiche peut être introduite dans une prise polarisée, dans un seul sens. Si la fiche ne rentre pas complètement dans la prise, la tourner dans l'autre sens. Si elle ne rentre toujours pas, contacter un électricien qualifié. N'essayer pas d'éliminer cette sécurité

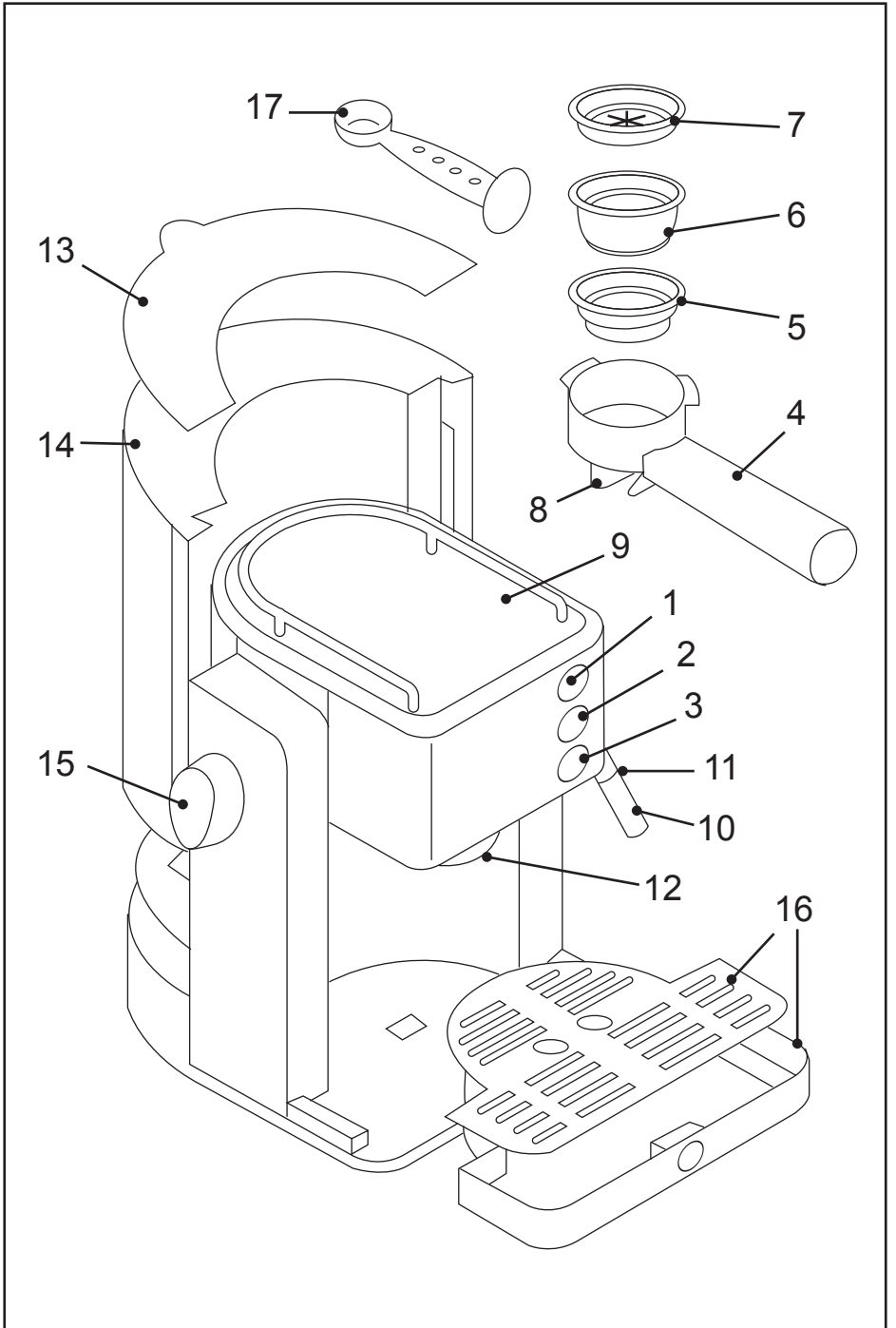


Fig.A

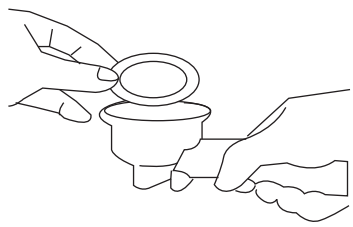
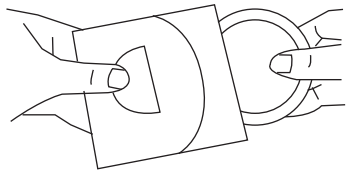


Fig.B

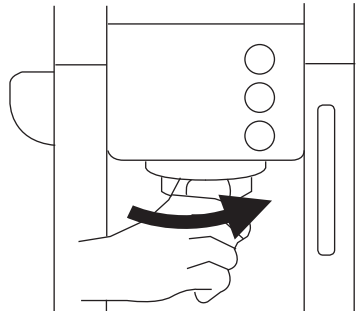
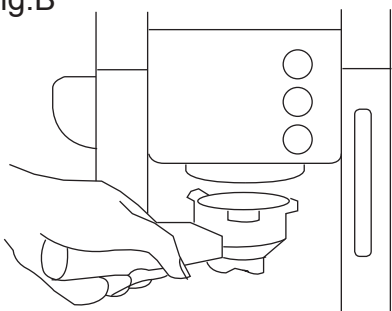


Fig.C

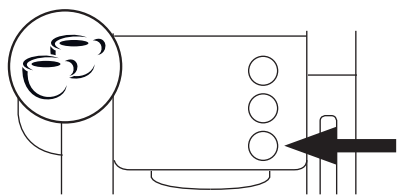
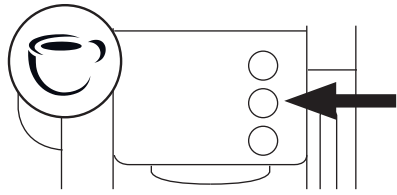


Fig.D

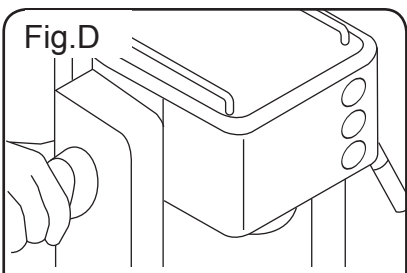


Fig.D1

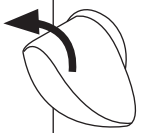


Fig.D2





Dear customer,

Many thanks for choosing to purchase a ESPRESSIONE brand product.

Its technology, design and practicality, along with fact that it has passed the strictest quality tests, will bring total satisfaction for a long time, and will enable you to discover the pleasure of savouring real espresso coffee.

- Read these instructions carefully before switching on the appliance and keep them for future reference. Failure to follow and observe these instructions may result in an accident.

- Clean all the parts of the product that will be in contact with food, as indicated in the cleaning section, before use.

- This appliance is only for domestic use, not for industrial or professional use.

It is not intended to be used by guests in hospitality environments such as bed and breakfast, hotels, motels, and other types of residential environments, even in farm houses, areas of the kitchen staff in shops, offices and other work environments.

- Appliance can be used by persons with reduced physical, sensory or mental capabilities or lack of experience and knowledge if they have been given supervision or instruction concerning use of the appliance in a safe way and understand the hazard involved

- This appliance can be used by children aged from 8 years and above if they have been given supervision or instruction concerning use of the appliance in a safe way and understand the hazards involved.

- Cleaning and user maintenance shall not be made by children unless they are older than 8 and supervised

- Keep the appliance and its cable out of reach of children under the age of eight.

- This appliance is not a toy. Children should be supervised to ensure that they do not play with the appliance.

- Ensure that the voltage indicated on the nameplate matches the mains voltage before plugging in the appliance.

- Connect the appliance to a base with an earth socket withstanding a minimum of 10 amperes.

- The appliance's plug must fit into the mains socket properly. Do not alter the plug. Do not use plug adaptors.

- Never use the electric wire to lift up, carry or unplug the appliance.

- Do not wrap the cable around the appliance.

- Check the condition of the electrical connection cable. Damaged or tangled cables increase the risk of electric shock.

- Do not touch the plug with wet hands.

- If any of the appliance casings breaks, immediately disconnect the appliance from the mains to prevent the possibility of an electric shock.

- Do not use the appliance if it has fallen on the floor, if there are visible signs of damage or if it has a leak.

- Keep the working area clean and well lit. Cluttered and dark areas invite accidents.

- The appliance should be used and kept over a flat and stable surface.

- Do not use the appliance with damp hands or feet, or when barefooted.

- Do not use the appliance, in the case persons insensitive to heat (the appliance has heated surfaces).

Use and care:

- Fully unroll the appliance's power cable before each use.

- Do not switch the appliance on without water.

- Do not use the appliance if the on/off switch does not work.

- Do not move the appliance while in use.

- Respect the MAX and MIN levels

- Unplug the appliance from the mains before refilling the water tank.

- This appliance should be stored out of reach of children and/or the disabled.

- Do not store or transport the appliance if it is still hot.

- Keep the appliance in good condition. Check that the moving parts are not misaligned or locked and make sure there are no broken parts or anomalies that may prevent the appliance from operating correctly.

- Never leave the appliance unattended while in use.

- Never leave the appliance connected and unattended if it is not in use. This saves energy and prolongs the life of the appliance.

- Do not remove the filter holder when coffee is being made, as at that time it is under pressure.

- Any misuse or failure to follow the instructions for use renders the guarantee and the manufacturer's liability null and void.

MAIN COMPONENTS

- 1 ON/OFF button with luminous indicator
- 2 Coffee outlet button (one cup) with luminous indicator
- 3 Coffee outlet button (one cup) with luminous indicator
- 4 Filter holder
- 5 1 cup filter (7g max)
- 6 2 cup filter (14g max)
- 7 E.S.E capsule filter
- 8 Coffee outlet holes
- 9 Cup warmer
- 10 Steam nozzle

- 11 Steam nozzle protector
- 12 Filter holder guide
- 13 Top cover
- 14 Water tank (1,220 ml)
- 15 Steam nozzle control
- 16 Cup holder tray
- 17 Coffee scoop

Function buttons:

Connected to mains

1 cup coffee brew

2 cup coffee brew

Steam nozzle control:

Closed

Preheating

Steam production

Fully open

2 TIPS

• Before using the coffee machine for the first time, we recommend

allowing the equivalent of 8-10 cups of water to run through the filter holder (with no coffee in the filter). This completely cleans the entire system.

- Getting the right espresso for every user's taste is a result of the type of coffee, the dose and the pressing:
- We recommend you choose your preferred coffee blend, one with a fine grind especially for espresso .
- The result will vary considerably according to the quantity of coffee used. If you want a strong coffee, you can exceed the dispenser spoon amount and fill the filter holder to the top.
- Finally, we recommend that you press the coffee to extract all the coffee essences and improve the cream.



USE

A. COFFEE

Initial use

The boiler may come empty from the factory. Fill the boiler for initial use of the coffee maker. With the coffee maker cold, perform a system refill cycle.

To do this:

1. Fill the tank with cold water. The tank (14) can be removed via the back of the coffee maker or open the lid (13) and pour the water in directly.
2. Plug the appliance into the mains.

3. Press the ON/OFF button (1) The luminous indicator (1) will flash blue.

Once it stops flashing:

4. Press the coffee outlet button (2/2) The pump will begin to operate. The water will start to come out through the coffee outlet.
5. Allow the water to circulate for a few seconds. The coffee maker is now ready for use.

Switching on

1. Fill the tank with cold water. The tank (14) can be removed via the back of the coffee maker or open the lid (13) and pour the water in directly.
2. Plug the appliance into the mains.
3. Press the ON/OFF button (1) The luminous indicator (1) will flash blue.

The luminous indicator on the ON/OFF button (1) will stay a fixed blue when it has reached working temperature and is ready to brew coffee.

During the heating cycles the blue light will flash again and will not permit coffee to be brewed.

We recommend placing the cups on top of the cup warmer tray (9) so that they warm up during this operation and ensure a better cream in the coffee.

Brewing the coffee

1. Place the filter that you wish to use, 1 or 2 cups (5, 6) into the filter holder (4)
2. Use the scoop (17) to measure in the coffee. Press the coffee down as per taste.
One scoop represents the recommended amount for one cup.
3. If you wish to use coffee capsules, follow the instructions given below:
 - A. Open the unit measure bag. Place the capsule filter (7) into the filter holder (4). Place the capsule into the filter holder.
 4. Put the filter holder (4) into the coffee maker.
- B. Make sure that the filter holder is securely closed, pushing the handle from left to right, otherwise it may drip.
5. Place one or two cups below the coffee outlet holes (8).

Coffee extraction (brew)

If you want your first coffee to be hotter, fit the filter holder without coffee and allow one or two cups of hot water to come out, this will heat up the coffee maker components.

1. Press button (2 or 3) depending on whether you want 1 or 2 cups. The luminous indicator on the corresponding button will light up
- C: 2. The coffee will begin to come out for the programmed time.

During the brewing cycle the luminous indicator on the selected button will flash and remain fixed when brewing has finished.

3. If you wish to stop the brewing cycle before time, press the corresponding button again. Brewing will stop.

Automatic pre-brewing function

After selecting the brew cycle, the coffee maker injects a little water to moisten the ground coffee just before brewing, which improves the aroma. This also helps to pack the ground coffee tighter to produce a brew at

higher pressure, improving the quality of the coffee and, in short, the cream.

Changing preset brew times

1. Press the corresponding button (1 or 2 cup) for 3 seconds, the coffee will come out when you release the button.
2. Press the corresponding button (1 or 2 cup) again and the coffee will stop coming out. The coffee outlet time will remain programmed for subsequent brews.
The amount of coffee needed for 1 or 2 cups may vary from brew to brew depending on the type of coffee used and how tight it is packed.
Nevertheless, the programmed brewing times will remain constant.

Resetting preset brew times

1. Press the two buttons (2 and 3) at the same time for 3 seconds. The ON/OFF luminous indicator will flash once. Then it will remain on fixed blue. The preset brewing values have now been re-established.

Cleaning

- If you have used ground coffee, clean out the grounds by placing the filter holder under a running tap.
- If you have used a capsule, remove it and put it in the rubbish.

B. STEAM D

To avoid possible burns always handle the steam nozzle (10) by the protector (11).

To heat any type of liquid using the steam nozzle (10).

1. Place the cup containing the liquid to heat below the steam nozzle.
2. Set the steam nozzle control (15) to the "Preheating" position D1.
The ON/OFF luminous indicator (1) will flash blue and then remain fixed blue when the steam nozzle is ready for use.
3. Insert the steam nozzle (10) into the liquid to heat and gradually open the steam nozzle control (15), to "Fully open" if you wish D2 .

At the beginning a little water will come out. If you wish, you can use an empty container to catch this water before inserting the steam nozzle into the liquid you want to heat.

If the steam loses pressure, set the steam nozzle control (15) to the "Preheating" position .

Wait until the ON/OFF luminous indicator (1) remains lit. Repeat these steps as many times as necessary.

- 4 Set the steam nozzle control (15) to the "Closed" position when you have finished using it.
- 5 When you have finished, clean away any waste matter that may have got inside it.

To do this:

Place an empty container below the steam nozzle and open the steam nozzle control (15) to allow steam to exit. The maximum time for steam production is 2 minutes.

AUTO OFF

If, after 30 minutes, the machine is not used it will switch itself off. All of the luminous indicators will switch off.

4 CLEANING AND MAINTENANCE

Disconnect the appliance from the mains and let it cool before undertaking any cleaning task.

Clean the equipment with a damp cloth with a few drops of washing-up liquid and then dry. Clean the tank and filter holder regularly. We recommend allowing 1-2 cups of water to run through the filter holder (with no coffee in the filter), to clean the filter holder.

Do not use solvents, or products with an acid or base pH such as bleach, or abrasive products, for cleaning the appliance.

Cleaning the steamer

1. If you use the steam nozzle to heat milk, clean it as soon as possible for easy cleaning. Wait for the steam nozzle to cool down and wipe it with a damp cloth.
2. Every now and again, for more thorough cleaning of the steamer, proceed as follows: wait until the steamer cools down and unscrew its cylindrical part anticlockwise. Wipe the steamer spindle with a damp cloth and soap the cylindrical part. Make sure that the small hole at the top of the steamer is clean before refitting the part.
3. Fit the steamer on its spindle, screwing it clockwise.

Descaling

To keep your coffee machine in a perfect condition, we recommend the use of a special descaler product for coffee machines to descale the appliance approximately once every 12 months (depending on the hardness of the water and the frequency with which the appliance is used). Descale more often if the appliance is used very frequently or the water in your area is very hard.

We recommend using the special for coffee descaler.

1. Follow the instructions that come with the de-scaling product.
2. To flush out the circuits, fill the tank again with water only, switch on the coffee maker, fit the filter holder without coffee, and carry out all the steps described in the 'Operation' section twice.



Anomalies and repair

- Take the appliance to an authorised technical support service if problems arise. Do not try to dismantle or repair without assistance, as this may be dangerous.
- If the connection to the mains has been damaged, it must be replaced and you should proceed as you would in the case of damage.

Ecology and recyclability of the product

- The materials of which the packaging of this appliance consists are included in a collection, classification and recycling system. Should you wish to dispose of them, use the appropriate public recycling bins for each type of material.

The product does not contain concentrations of substances that could be considered harmful to the environment



Espressione

c/o The Smith Agency, Ltd.
P.O. Box 669307
Marietta, Georgia USA
30066.0106
Phone 770.509.3006
Fax 770.509.8736
espressione@smithagy.net

After Sales Service Electra Craft

41 Woodbine Street
Bergenfield, NJ 07621
Phone 201 439 1700
Fax 201 439 1701
info@electra-craft.com

Net weight (Aprox.): 4,20 Kg
Gross weight (Aprox.): 5 Kg